

PROJECTS COMING ALIVE IN '25



SOUTHSIDE TRANSIT CENTER

The City's Southside Transit Center, located on the corner of Orange Avenue and Meridian Street, will be transformative for the area and serve the highest concentration of StarMetro riders. This state-of-the-art facility will make it easier for neighbors to access economic, educational and leisure opportunities, as well as essential services.

TPD HEADQUARTERS

A key component of the redevelopment of the former Northwood site is the City's construction of the new Tallahassee Police Department headquarters. This new facility has been designed to meet TPD's operational needs and provide community amenities.

SENIOR CENTER

The City recently broke ground on its second senior center, located in the Canopy Development. When complete, this additional facility will offer expanded programs for the rapidly growing population of active seniors and include a multipurpose gym with six indoor pickleball courts and two basketball and volleyball courts.

AMERICA'S STRONGEST ECONOMY

Frequently regarded as having the best parks, being a top place to start a career, and one of the best places to retire, Tallahassee now has the distinction of leading the nation in economic strength.

According to a report published by Area Development, a national publication focusing on the corporate site selection and relocation industry, Tallahassee has the strongest economy in the United States.

This report provides an objective measure and comparison of cities and underscores Tallahassee's focus on economic growth. This determination was based on extensive data analytics spanning a five-year period and highlights Tallahassee's emergence as a prime destination for business investment and professional endeavors.



Sustainability Tip



Rediscover outdoor cooking with a natural gas grill. Keeping the heat out of the kitchen can help reduce your summer air conditioning costs.

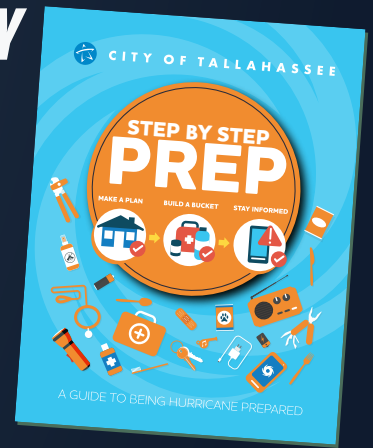


HURRICANE SEASON: KEEP YOUR PREP GUIDE HANDY

Hurricane season runs from June 1 to November 30, and the City continues to actively prepare. During a natural disaster, there may be a time when responders cannot reach you. You are your best first line of defense. Citizens play a vital role in surviving and recovering from a disaster, so residents should also make and review their emergency plans and preparations. To guide residents through the planning process, the City offers its Step by Step Prep guide. In this colorful booklet, you'll learn what to do before, during and after storms, as well as find information about City services. You can download the Step by Step Prep guide at Talgov.com/PREP to help your household prepare.



SCAN THE QR CODE
TO DOWNLOAD
THE HURRICANE PREP GUIDE



SIGN UP FOR TEXT ALERTS

Talgov.com/Subscribe

BE THE DIFFERENCE YOU WANT TO SEE



JOIN OUR TEAM

Talgov.com/Jobs

PICKLEBALL AT ITS BEST



Pickleball is one of the fastest growing sports in America for people of all ages, and the City of Tallahassee is at the forefront of the action. With

multiple outdoor and indoor locations, it offers pickleball at its best. This year's Capital City Senior Games had a record turnout—302 players ages 50-84 participated. The City's newest outdoor pickleball courts opened in 2023 at Four Oaks Park in Southwood. When the second Tallahassee Senior Center opens in 2025, it will house a double-size multipurpose gym with six indoor pickleball courts. Both indoor and outdoor court options are available seven days a week. View the full list of City courts at Talgov.com/Pickleball. On the site, you can also learn about clinics, round robins, leagues, court reservations and more.

KNOW WHAT'S BELOW



The City of Tallahassee Gas Utility installs yellow pipeline markers along the route of its gas pipeline to indicate an underground gas facility is in the general area. Markers may not be placed directly over the pipeline, and they don't indicate its depth, which will vary. They show the owner of the pipeline, the product contained in the pipeline and the number to call in the case of an emergency. In dense residential and downtown areas, pipeline markers may not be present even though underground gas facilities may be within the right-of-way. Knowing the approximate location of underground facilities is important before any digging project to avoid being injured and causing a service disruption. If you are planning to dig, call 811 at least two full business days in advance to have the approximate location of underground facilities marked, and then use caution while digging. Know what's below. Call before you dig. In case of a natural gas related emergency, after you call 911, call the Gas Utility at 850-891-4968.

For all City of Tallahassee utility related inquiries, please call 850-891-4968 or visit Talgov.com.

TALGOV.com @CityofTLH

Insight is published monthly to inform citizens about City services and related items of interest. If you require an accommodation because of a disability in order to participate in a program, service or activity, please contact the City's ADA/Title VI Coordinator at least two business days prior to the event at 850-661-3235 or Kathleen.Wright@Talgov.com. For persons using a TDD, please call 711. Sign language interpreters require 10 days advance notice.



MEETINGS IN JULY

Visit Talgov.com for the current list of Tallahassee City Commission, Community Redevelopment Agency, Capital Region Transportation Planning Agency and Blueprint Intergovernmental Agency meetings and workshops. Call the Department of Communications at 850-891-8533 for more information and view the current meeting agendas online at Talgov.com. Follow @CityofTLH on X (formerly Twitter) for City news.