

# TALLAHASSEE ACROSS THE GLOBE



**TALLAHASSEE**  
INTERNATIONAL AIRPORT









# WELCOME TO TLH

Tallahassee – Florida’s Capital City – is the economic, educational and cultural hub for the North Florida / South Georgia region. Home to three major institutions of higher learning, world-class research institutes and a host of companies large and small, it’s a bustling, vibrant city that offers global reach with hometown charm. In fact, the Tallahassee Metropolitan Statistical Area (MSA) was ranked as the strongest economy in the United States by Area Development. This recognition is a reflection of the City’s focus on economic growth and further positions Tallahassee as one of the nation’s prime areas for business investment and job creation. In these pages, delve into what sets Tallahassee apart and opportunities for your business to take flight in partnership with the Tallahassee International Airport (TLH).





Nearly 1.5 million people reside within a 90-mile radius of the airport, and TLH serves a diverse population in a 34 county area encompassing North Florida, Southwest Georgia and Southeast Alabama. TLH has an annual impact on the region of nearly \$1 billion.



The Tallahassee International Airport (TLH) is located in Tallahassee, the capital city of Florida. TLH is owned, operated, and managed by the City of Tallahassee. Situated in Leon County, the airport is only a six mile drive from downtown Tallahassee and the Florida State Capitol and five miles from Interstate 10.



TLH is included in the national airport system by the National Plan of Integrated Airport Systems (NPIAS) and is designated a Non-hub Primary Commercial Service Airport by the Federal Aviation Administration (FAA). TLH is a 2,485-acre site with two all-weather, non-intersecting, paved runways; full-length parallel taxiways; three general aviation (GA) aprons, a commercial aircraft apron, and an air cargo apron with all-weather, 24-hour operations. TLH has uncongested airspace, which facilitates smooth operations for carriers.

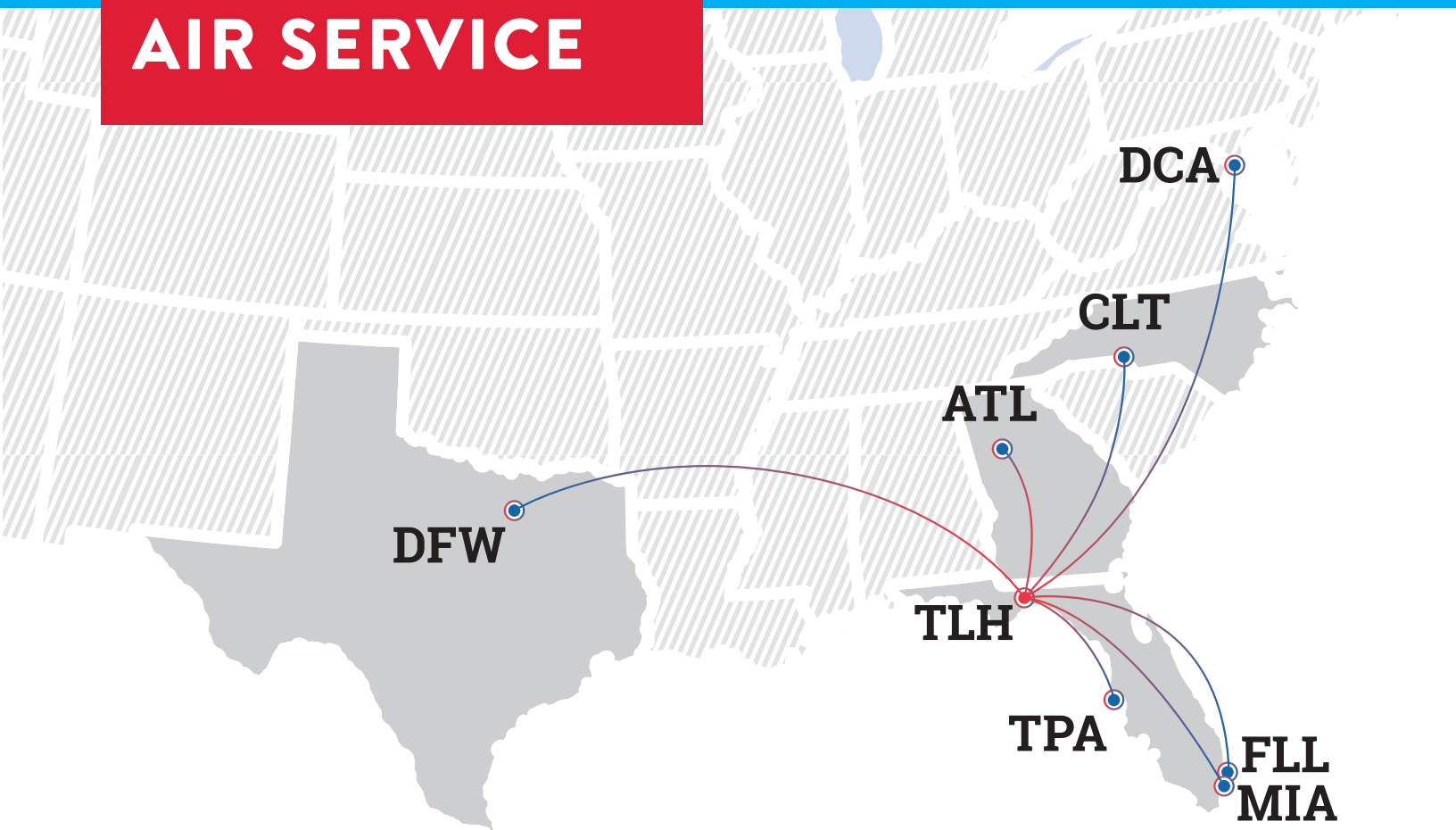


Serving the state capital, TLH supports a full range of commercial, military, and GA activities. The airport has 485+ acres of land available for development. GA aircraft, pilots, and their passengers are supported by two fixed-base operators (FBOs); Aero Center Tallahassee and Million Air Tallahassee. Multiple specialized aviation service operators are also located at the airport.





# COMMERCIAL AIR SERVICE



TLH offers daily non-stop passenger flights with commercial air service to seven major hubs, with connections to virtually every major global destination.

TLH is served by three airlines: American Airlines, Delta Air Lines, and Silver Airways, along with five affiliate airlines: Endeavor Air, Envoy Air, PSA Airlines, Piedmont Airlines, and Republic Airways. These airlines provide non-stop service to Atlanta (ATL), Charlotte (CLT), Dallas-Ft. Worth (DFW), Miami (MIA), Fort Lauderdale (FLL), Tampa (TPA), and Washington, D.C. (DCA).

As of the 12-month period ended September 2024, airlines at TLH provided service to 943,488 passengers.

# YOUR GLOBAL GATEWAY TO NORTHWEST FLORIDA

## FEDERAL INSPECTION SERVICES (FIS) FACILITY AND FUTURE FOREIGN TRADE ZONE (FTZ)

SCAN TO  
LEARN MORE

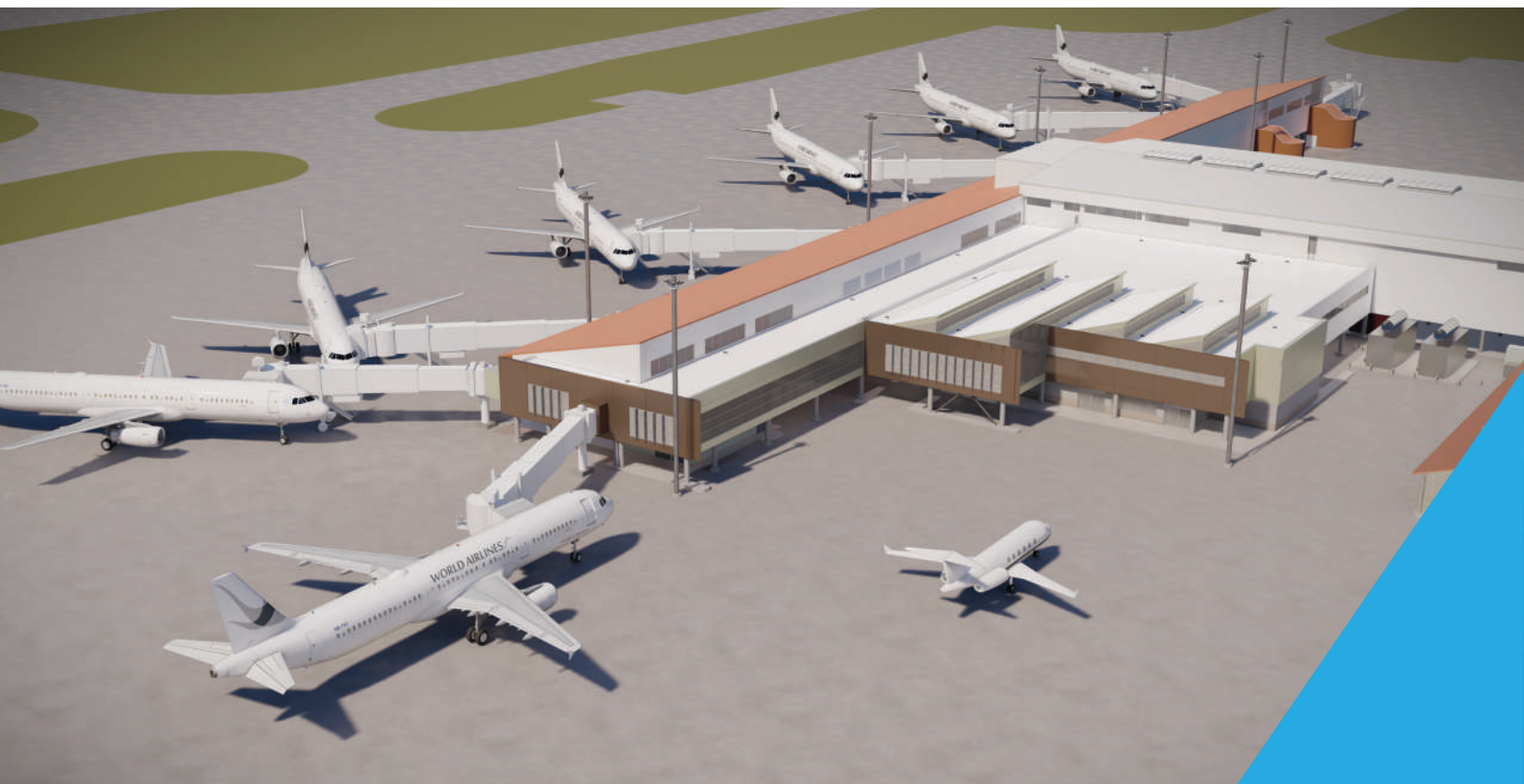


### **BENEFITS TO NORTHWEST AND NORTH CENTRAL FLORIDA:**

- Bolsters the Region's Global Market Competitiveness
- Encourages International Commerce
- Catalyst for Economic Growth in the Region
- Attracts International and Domestic Businesses
- Increases Regional Job Creation Opportunities

### **BENEFITS TO FTZ USERS:**

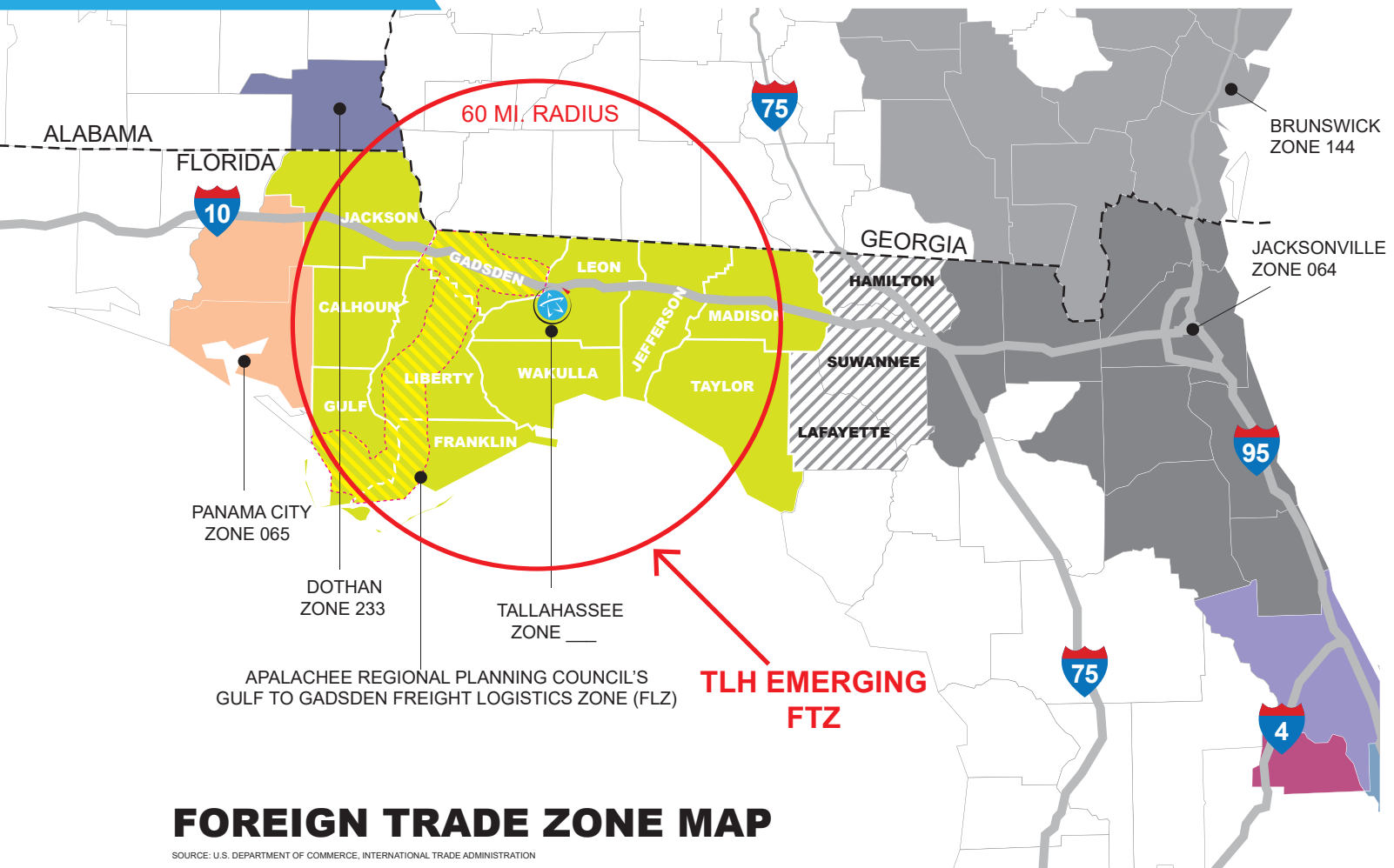
- Weekly Entry and Direct Delivery
- Improved Supply Chain Velocity
- Elimination of Duty Drawback
- Exports and Scrap are Duty Free
- Inverted Tariffs on Manufacturing





TLH is the site of an emerging International Port of Entry. TLH received conditional approval from U.S Customs and Border Protection (CBP) to be designated as a User-Fee Airport. Construction of a 40,000 square foot world-class Federal Inspection Services (FIS) Facility, a \$30.5 million investment, is underway and is expected to be operational in 2025. The FIS will meet all CBP design standards for processing up to 200 passengers per hour.

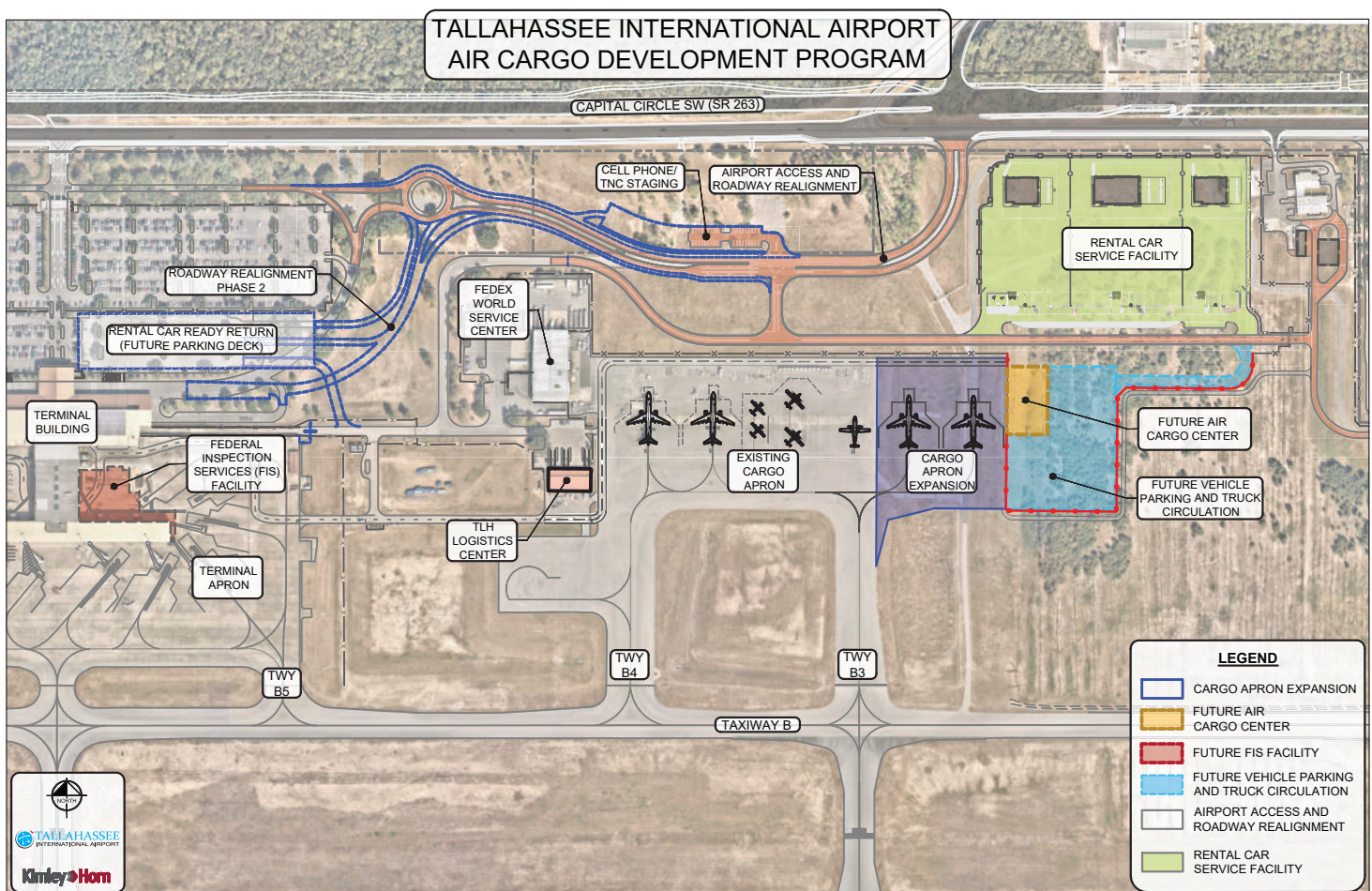
To align with the opening of the FIS, TLH will be home to a fully operational Foreign Trade Zone (FTZ) with CBP oversight that will serve up to 11 surrounding counties from Interstate 75 to Port St. Joe, Florida, subject to U.S. Foreign-Trade Zones Board approval. The new zone will support international commerce, stimulate the economy, and bolster the Northwest and North Central Florida Region’s global market competitiveness. As a significant catalyst for economic growth, the Zone is projected to create more than 1,600 jobs over the next 10 years and generate over \$300 million in annual economic impact once full maturity is reached in 2035.



# CARGO SITE DEVELOPMENT & EXPANSION PLANS

TLH is the Northwest Florida region's primary cargo facility and is committed to expanding and sustaining its support of air cargo services worldwide. The airport is well positioned to serve the growing economy's transportation and logistics needs.

Plans are currently underway to expand the existing air cargo apron at TLH. Future plans include the development of approximately 10 acres of apron space. The expanded cargo apron will share apron access with FedEx. TLH will also upgrade a legacy cargo facility to support the requirements of future air cargo needs, including cross-border and e-commerce packages.







# CARGO SITE ACCESSIBILITY

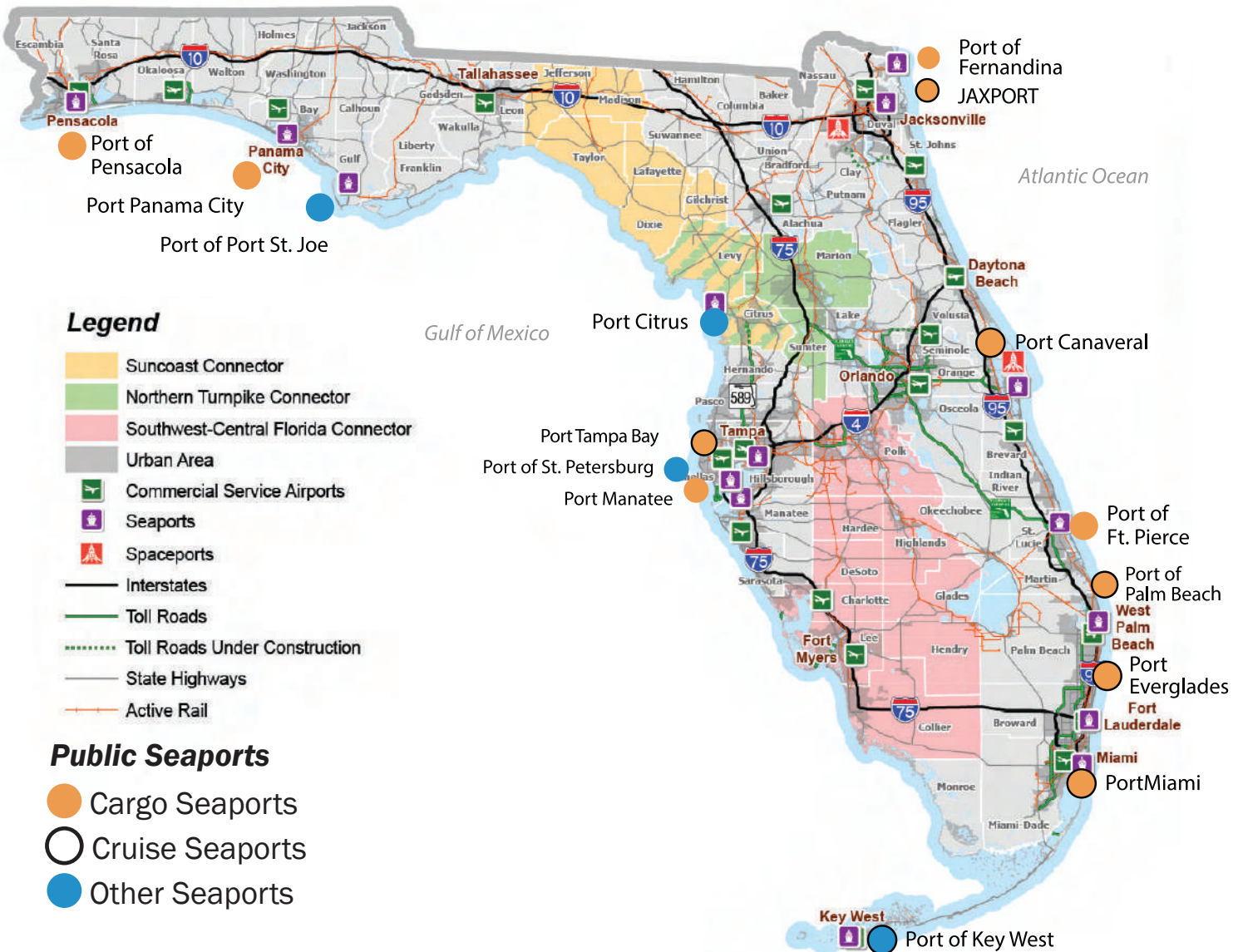
TLH's cargo site in Florida's Panhandle is conveniently situated approximately five miles from Interstate 10, a major east-west transportation route that spans from Jacksonville, Florida to Los Angeles, California. TLH is approximately a 90-minute drive to Interstate 75 which spans north to south of Florida. Airport properties have direct access onto SR 263 (Capital Circle SW), which is currently being expanded from two to six lanes, providing easy access to Port St. Joe, Panama City, Port of Jacksonville, and CSX Rail.





# TRANSIT CONNECTIONS

Through TLH, businesses and travelers can easily connect to other regional destinations.

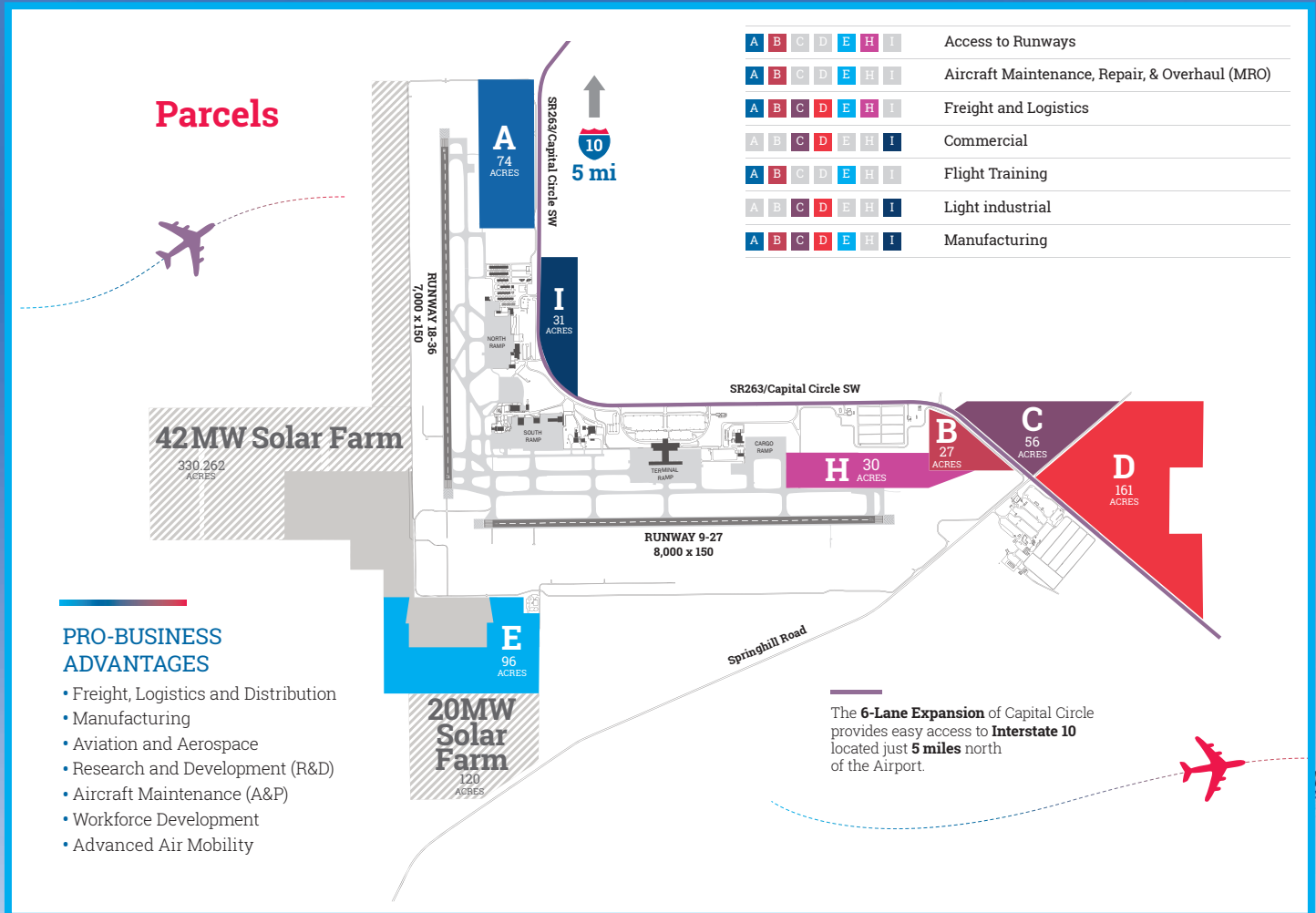




# ONSITE OPPORTUNITIES

There are eight (8) IFR approaches to the various runways including:

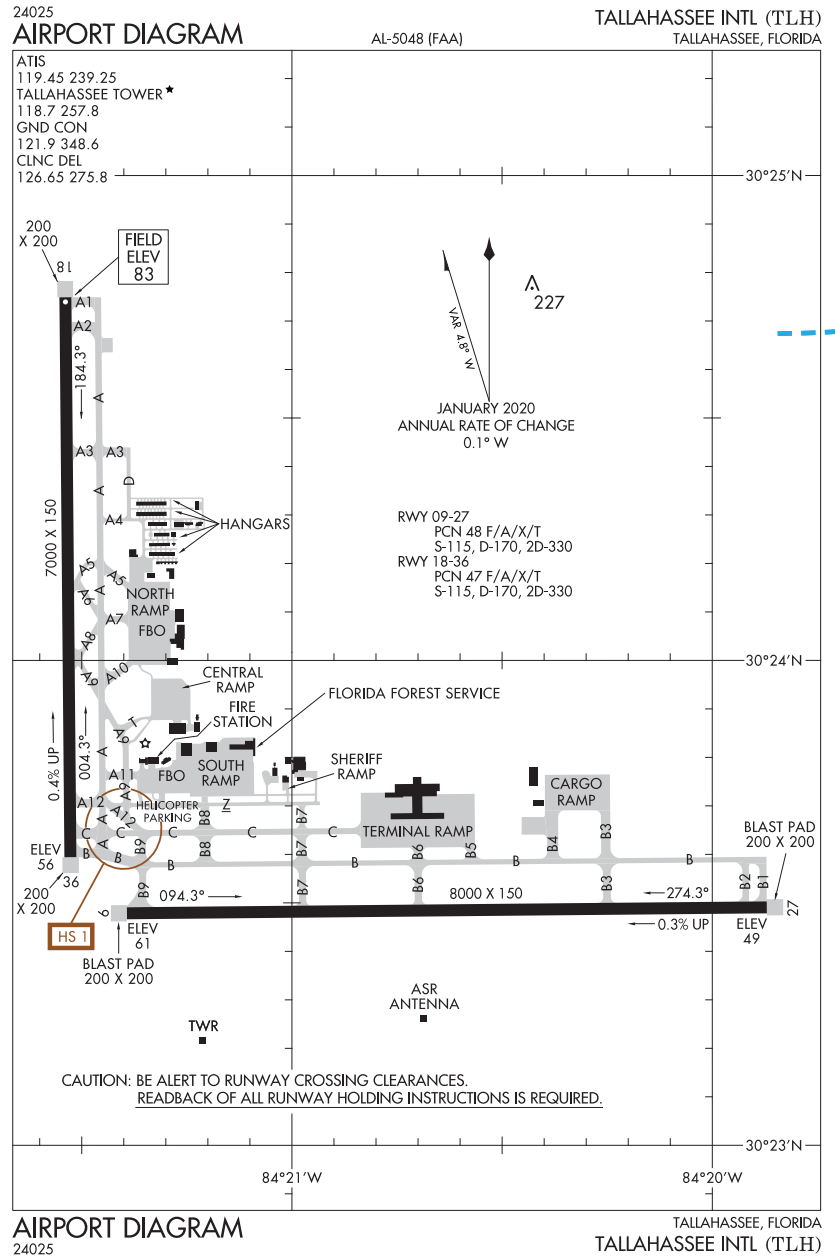
- o ILS Cat II Runway 27
- o ILS Cat I Runway 36
- o VOR/DME or TACAN Runway 36
- o VOR Runway 18
- o RNAV/GPS (LPV) Runway 9
- o RNAV/GPS (LPV) Runway 18
- o RNAV/GPS (LPV) Runway 27
- o RNAV/GPS (LPV) Runway 36



# AIRFIELD CHARACTERISTICS

TLH is a 2,485 acre site with two all-weather, non-intersecting runways; full-length parallel taxiways; three general aviation aprons; a commercial aircraft apron; and a cargo apron with all-weather, 24-hour operations.

Runway 9-27, TLH's primary runway, has a Category II Instrument Landing System (ILS) with High Intensity Runway Lights (HIRL), both edge and centerline lights, Touchdown Zone Lights (TDZ), and an Approach Light System with Sequenced Flashing Lights (ALSF-2) on the Runway 27 end. Both ends have Precision Approach Path Indicator (PAPI) lights. Runway 18-36 has a Category I ILS with HIRL on the edge only and a Medium Intensity Approach Light System with Runway Alignment Indicators (MASLR) on Runway 36. There are PAPI lights on both runway ends.





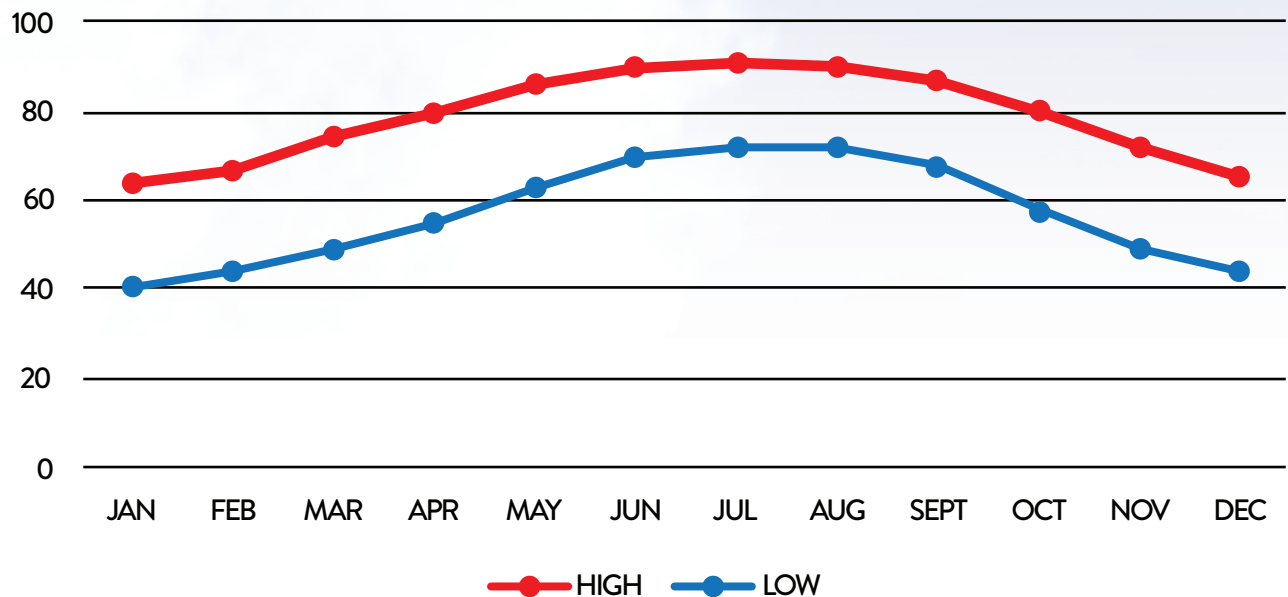


# WEATHER CHARACTERISTICS

Normal temperatures at TLH range from a low of 45 - 60 degrees Fahrenheit in winter to a high of 78-85 degrees Fahrenheit in summer. Average monthly high and low temperatures for TLH are shown in the chart.

TLH has excellent wind speeds for aircraft operations with wind speeds below 10 knots 99.5% of the time for all-weather conditions and 99.3% of the time for IFR conditions. Wind speeds are below 16 knots 99.1% of the time for all-weather conditions and 99.8% of the time for IFR conditions.

### TLH AVERAGE DAILY LOWS AND HIGHS (IN FAHRENHEIT)



**APPLIED SCIENCES  
& INNOVATIONS**

**PROFESSIONAL  
SERVICES & IT**

**TARGET  
INDUSTRIES**

**MANUFACTURING &  
TRANSPORTATION/  
LOGISTICS**

**HEALTH CARE**



# RESEARCH & DEVELOPMENT HUB

Tallahassee is home to a thriving research and development community. TLH is located only 3 miles from Innovation Park, North Florida's premier research and development district. Innovation Park includes over 17 buildings

and houses 30 organizations ranging from university research facilities to specialty manufacturing companies to federal government research spaces.

Notably, Tallahassee is considered the "Magnetic Capital of the World." Innovation Park is home to the National High Magnetic Field Laboratory (MagLab), funded by the National Science Foundation and the State of Florida. The MagLab is the largest and highest-powered magnet lab in the world and the only facility of its kind in the United States. Danfoss Turbocor, a global leader in oil-free centrifugal compressors for the HVAC industry, chose Florida's Capital City as its North American headquarters in 2011 and expanded its Tallahassee based operations in 2024. The Florida Center for Advanced Aero-Propulsion (FCAAP), specializing in wind tunnel research, is also located in Innovation Park.

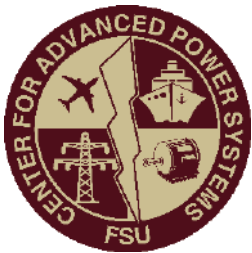


# COMPETITIVE ASSETS

Tallahassee boasts strong scientific innovation resources, with 28 preeminent university research facilities, specialty manufacturing companies, cutting-edge firms, and top-tier institutions of higher learning, as well as state and federal government research facilities.



FAMU-FSU  
College of Engineering





## Amazon

Amazon.com, Inc. selected Leon County, Florida, to house a new 3,200,000 square-foot robotics fulfillment center.

- Largest recruitment project to date
- Created over 2,000 new jobs, for a total of \$451 million in economic impact
- Estimated Capital Investment: \$250,000,000



## Danfoss

Danfoss is the leading manufacturer of oil-free compressors and the pioneer of the Danfoss Turbocor(R) compressor - the world's first, oil-free, magnetic-bearing compressor for the HVAC industry.

Two expansions, and 360 new permanent jobs, for a total of \$270.8 million in economic impact. Estimated Capital Investment: \$43,000,000



## Philips MRI

Philips, one of the world's leading MRI magnet manufacturers, is partnering with Tallahassee-based MagCorp and the National MagLab to develop a new MRI magnet that will make MRI imaging more affordable, accessible, and sustainable for undeveloped & developing countries.



# SUSTAINABILITY AT TLH

As an industry leader, the City is committed to providing the highest level of utility services while working toward a sustainable, clean energy future. In 2019, the City Commission took the bold and visionary step of committing to transition Tallahassee to a 100% clean, renewable energy future by 2050, with continued reductions in greenhouse gas emissions along the way.

As part of these efforts, TLH is home to the largest airport-based solar array in the world, which generates 62-megawatts of solar power. This affords TLH and its tenants the option of having 100% of electrical needs met with renewable energy.

Additionally, the City has been helping its utilities customers save energy, water and money through rebates, grants and loans for decades. It also provides free energy audits to help identify ways to save.

Healthy, vibrant living is a hallmark of Tallahassee. By upgrading its infrastructure with a focus on sustainability, the City works to do its part to ensure a high-quality way of life continues for generations to come.



<b>Solar 1 Opened 2018</b>	<b>Solar 2 Opened 2020</b>
120 Acres	330 Acres
20MWac	42MWac





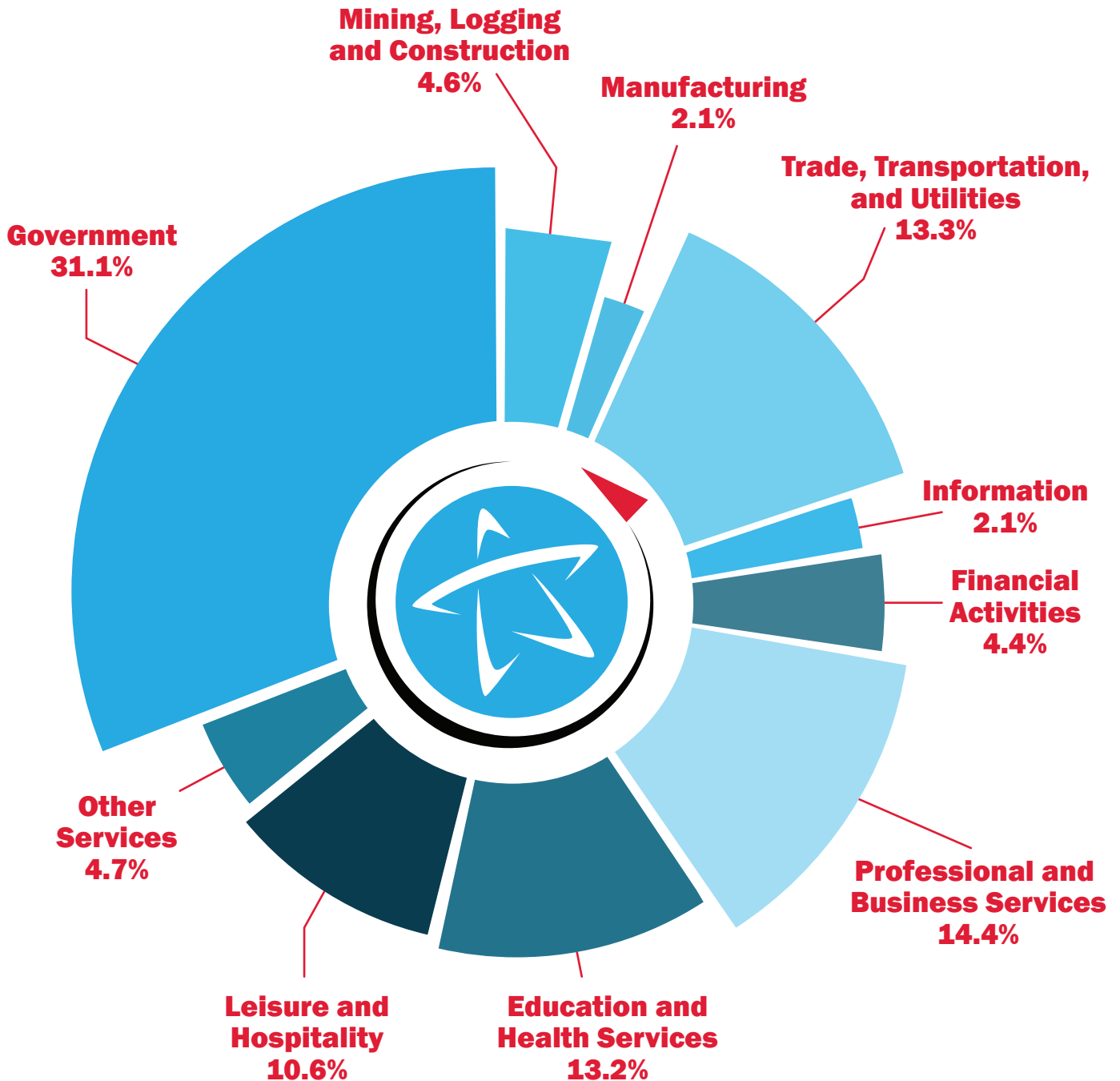
# FLORIDA'S CAPITAL CITY

The City of Tallahassee celebrates its bicentennial in 2024 and continues to proudly serve a diverse community in all facets of life, work and recreation. With nearly 100 parks, 80+ miles of trails, the #1 disc golf course in Florida, ample public art, multiple cultural festivals, access to lifelong learning, an active volunteer base and much more, residents and visitors alike value the unique qualities that continually earn Tallahassee nationwide recognitions, including Most Livable City and one of the South's Best Cities.



# ECONOMIC DIVERSITY

The Tallahassee Metropolitan Statistical Area (MSA) – consisting of Leon, Gadsden, Jefferson, and Wakulla counties in Florida – was named the **Strongest Economy in the US** when compared to 383 MSAs in the Nation in the 2023 Leading Metro Locations report published in the Q4 2023 issue of Area Development magazine. The Tallahassee MSA also received high marks as a leading metro area in three other areas.





# TALLAHASSEE MSA BY THE NUMBERS

The Tallahassee MSA also received high marks as a leading metro area in three other areas.

## #2 MID-SIZED METRO LOCATIONS

Tallahassee ranked #2 in the U.S. compared to other MSAs with a population of 160,000 - 600,000.

## #4 METRO AREA, SOUTH ATLANTIC REGION

Tallahassee ranked #4 in the South Atlantic Region, consisting of the top 10 MSAs in Delaware, Florida, Georgia, Maryland, North Carolina, South Carolina, Virginia, West Virginia, and the District of Columbia.

## #9 U.S. METRO LOCATION, OVERALL

Tallahassee ranked #9 in the U.S. across all economic indicators compared to 383 other MSAs.

Current  
Populations

**394K**

Median  
Age

**34**

Prime-Age  
Labor Force

**62%**

Annual Labor  
Force Growth

**0.7%**



**Strongest Economy in the U.S.** by  
*Area Development* magazine (2023).



**#9 Best Places to Live in Florida** by  
U.S. News & World Report (2024).



**#20 Best Mid-Size Cities in the U.S.**  
by HGTV (2023).



**7% Below Average Cost of Living** by  
the Council for Community and  
Economic Research (2023).



**#21 Most Educated City in the U.S.**  
by WalletHub (2023).



**Over 700 miles of greenways and trails** for hiking, cycling, running, paddling, and equestrian adventures.



**Proximity to Emerald Coast Beaches,**  
renowned for their breathtaking blue  
green waters and sugar white sand.









**Voted by HGTV as one of "The Top Best Mid-Size Cities in the United States"**



**Magnetic Capital of the World**

**#10 Best City in the South (Southern Living Magazine)**



**#17 Most Educated City in the U.S. (WalletHub)**



**Best Cities for Jobs and Wage Growth in America (Milken Institute)**



**One of Most Educated Cities in America and Most Educated City in Florida (JobsEQ)**

**Top 10 Cities for Career Opportunities (Smart Asset)**



**Ecotourism: Over 700 miles of greenways and trails for hiking, biking, riding, and paddling**



**Sports Tourism: Athletic Venues Generate an Estimated \$190.0M in Economic Impact**



**Business-Friendly Climate/Corporate Tax Exemptions**





**Ten Best Places to Get a Fresh Start (Livability)**



**Below Average Cost of Living (C2ER)**

**Cost of Living Index 2.9% Below National Average (Source: Council for Community and Economic Research)**



**Housing Costs 7.8% Below National Average (Source: Council for Community and Economic Research)**



**Strongest Economy in the United States by Area Development Magazine**

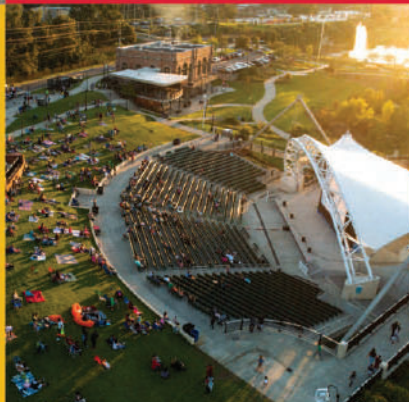


**LeMoyné Chain of Arts Festival Ranked #1 in "100 Best Fine Art & Design Shows" (Sunshine Artist Magazine)**

**Proximity to Emerald Coast Beaches (less than one hour from Bald Point State Park)**



**Top 100 Places to Live (Livability)**



**Top 100 Places to Retire (WalletHub and U.S. News)**



**#2 Place Where Older Workers Thrive (AARP)**





# CITY OF TALLAHASSEE

The City of Tallahassee has **more than \$100 million in strategic investments** that will come alive over the next year, including an international processing facility at Tallahassee International Airport to support the Foreign Trade Zone that will **serve up to 11 counties** and create **more than \$300 million in annual economic impact**. By investing in infrastructure and quality of life amenities, Tallahassee is attracting new businesses and over the last five years has created **more than 15,000 jobs**, while **growing the local economy nearly 25 percent**.

Copyright © 2024 City of Tallahassee.

All rights reserved. No part of this publication may be reproduced in any form without permission from the author or publisher, except as permitted by U.S. copyright law. Some photography provided by their respective copyright holders.

For inquiries contact the Department of Communications at [Communications@Talgov.com](mailto:Communications@Talgov.com).



“

Airports connect people and resources while driving economic growth. Serving Florida’s Capital City and the surrounding areas, Tallahassee International Airport exemplifies this, with an economic impact of nearly \$1 billion and welcoming nearly 1 million passengers annually. With its emerging Foreign Trade Zone designation, TLH is poised to become the region's global connection point, creating more business opportunities. Discover how you can grow alongside us as TLH reaches new heights.

- David J. Pollard  
Director of Aviation  
Tallahassee International Airport



Advanced Air Mobility Craft  
Source: Joby Aviation



City of Tallahassee

# INNOVATE. ACCELERATE. ELEVATE.



3300 CAPITAL CIRCLE SW  
TALLAHASSEE, FLORIDA 32310  
PHONE: (850) 891-7802

**TLHAIRPORT.COM**

TLHAirport.com



**SCAN TO  
LEARN  
MORE**